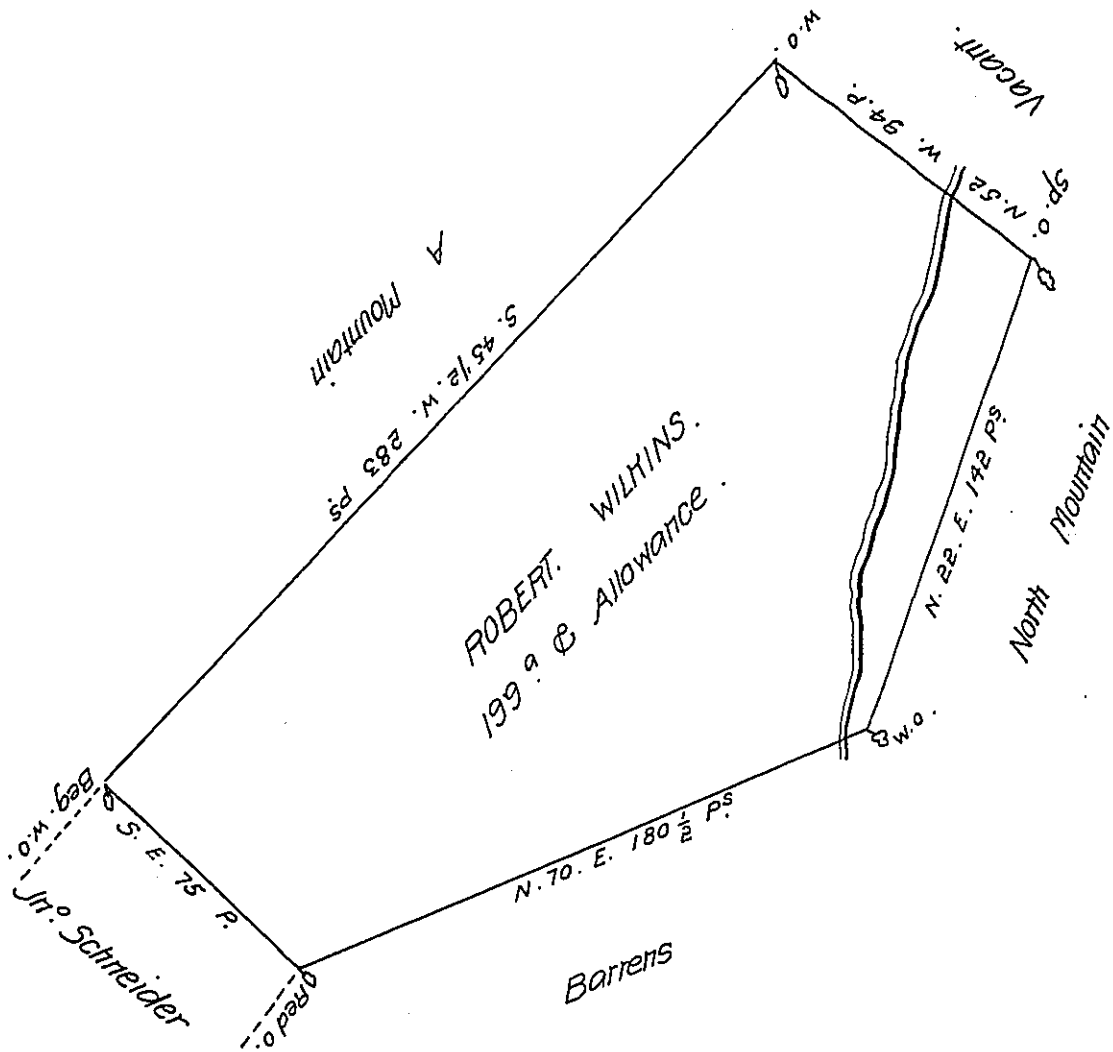


FORM NO 1.



A Draught of a Tract of obland situate in Letterhenny Township (obliterated . . . ) of (obl.)  
 Containing One Hundred & ninety nine Acres and an Allowance of Six P<sup>ct</sup> Cent for Roads  
 &c. Survey'd August 15<sup>th</sup> 1770 in Pursuance of an Order of Survey granted to Robert Wil-  
 kins Dated May 5<sup>th</sup> 1769 and Numbered 5454.

To John Luters Esq<sup>r</sup> }  
 Surveyor General. }

John Armstrong. D. S.

IN TESTIMONY that the above is a copy of the original remaining on file in  
 the Department of Internal Affairs of Pennsylvania, made  
 conformably to an Act of Assembly approved the 16th day of  
 February, 1833, I have hereunto set my Hand and caused  
 the Seal of said Department to be affixed at Harrisburg,  
 this twenty fourth day of June 1908.

*Henry Howard*  
 Secretary of Internal Affairs.